

# I AM INUIT

FEB. 24 - SEPT. 17

# I AM







FEB. 24 - SEPT. 17  
ANCHORAGE MUSEUM

MAY 8 - MAY 31  
UNIVERSITY OF ALASKA  
FAIRBANKS ART GALLERY







# I AM INUIT



LEARN MORE AT [IAMINUIT.ORG](http://IAMINUIT.ORG)

*I AM INUIT* is a project of the Inuit Circumpolar Council and the Anchorage Museum and is made possible, in part, by:

*Alaska Dispatch News*

*Maniilaq Association*

*The Alaska Humanities Forum*

*NANA Regional Corporation*

*Arctic Slope Regional Corporation*

*The Oak Foundation*

*Kawerak, Incorporated*

Drawings by Becka Olson

FEB. 24 - SEPT. 17  
ANCHORAGE MUSEUM

MAY 8 - MAY 31  
UNIVERSITY OF ALASKA  
FAIRBANKS ART GALLERY

[iaminuit.org](http://iaminuit.org)







The United States is an Arctic nation because Alaska lies above the Arctic Circle. For the people who reside in Alaska's Arctic, place is not a curiosity, nor is it an untouched wilderness. It is home. Four million people live in the Arctic today.

I AM INUIT is an Inuit Circumpolar Council Alaska project that seeks to connect the world with Alaskan Inuit (Inupiat, Yup'ik, Cup'ik and St. Lawrence Island Yupik) and the Arctic through common humanity.

Beginning in 2015, photographer Brian Adams traveled to Alaskan Arctic villages to document portraits and stories of people, as well as the landscape, as a way to promote understanding, and to connect many people outside the region to the Arctic.

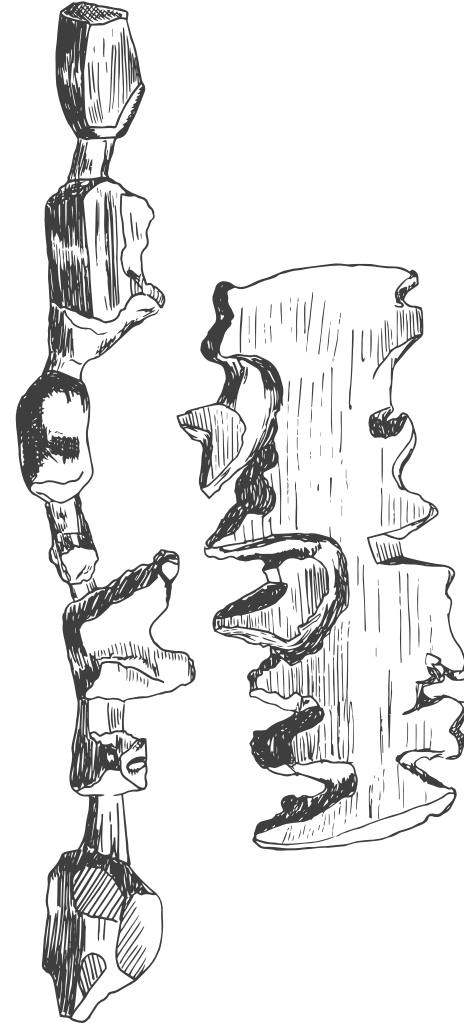
Places represented include Quinhagak, Teller, Shungnak, Utqiagvik, Point Hope, Wainwright, Anaktuvuk Pass, Kaktovik, Kotzebue, Buckland, Noorvik, Noatak, Nome, Shishmaref, Shaktoolik, White Mountain, Bethel, Hooper Bay, Alakanuk, and Tuluksak, as well as more urban places like Anchorage.

Photos and stories are also shared on I AM INUIT's social media pages (Facebook, Twitter, Instagram and Tumblr), and on a website dedicated to the project: [www.iaminuit.org](http://www.iaminuit.org).

*Artist Brian Adams takes photographs of places where people live and make their homes. Create an image of a place where you feel most at home. Notice that overlaying the self-portrait will put you in this place!*



## AMMASSALIK MAP

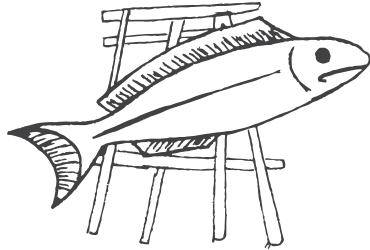


*Carved wooden maps like these have been used by Inuit in Greenland to map the coastline. These maps are meant to be held and touched. Maps like these might be used with a detailed story or a drawing in the snow to share information about an important place. How is this map similar or different from maps you have seen and used?*

I AM...

*Artist Brian Adams creates portraits of his subjects by taking photographs and documenting personal stories. Create a portrait of yourself with drawing, writing, or both.*

## KEY TERMS



**[drying racks]:** Racks made of birch bark, used to dry out meats and skins.

**[arctic circle]:** An imaginary circle around the Earth, about three quarters away from the equator to the North Pole.



**[sour dock leaves]:** Iñupiaq name *qaugap*: Slightly toothed green leaves.

## CIRCUMPOLAR NORTH

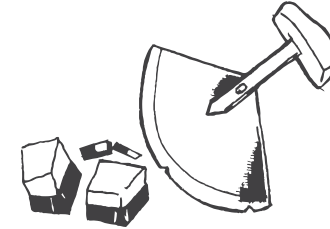


*Inuit peoples live throughout the circumpolar north, as the map shows.*

## MAPPING ACTIVITY

Maps can take many different shapes and forms. How do you represent your world? Create your own map of the place in which you live.


## KEY TERMS



**[ulu]** (/ˈooloo/):

Short-handled knife with a crescent-shaped blade. Used to chop, carve, and skin.

**[muktuk]**  
(/ˈmæk,tək/):

The skin and blubber of a whale.

**[ice cellar]:**

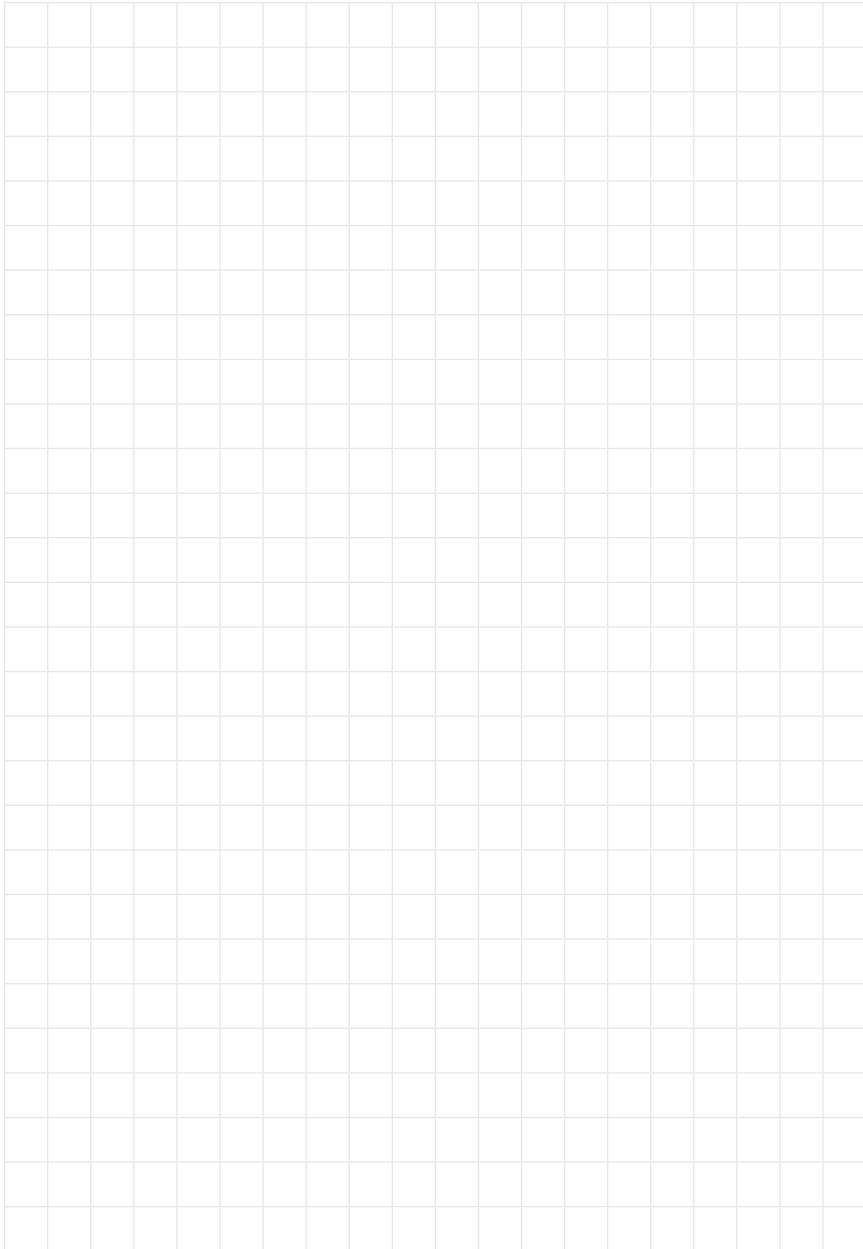
Iñupiaq ice cellars are dug into the permafrost and are used to store traditional foods throughout the year.



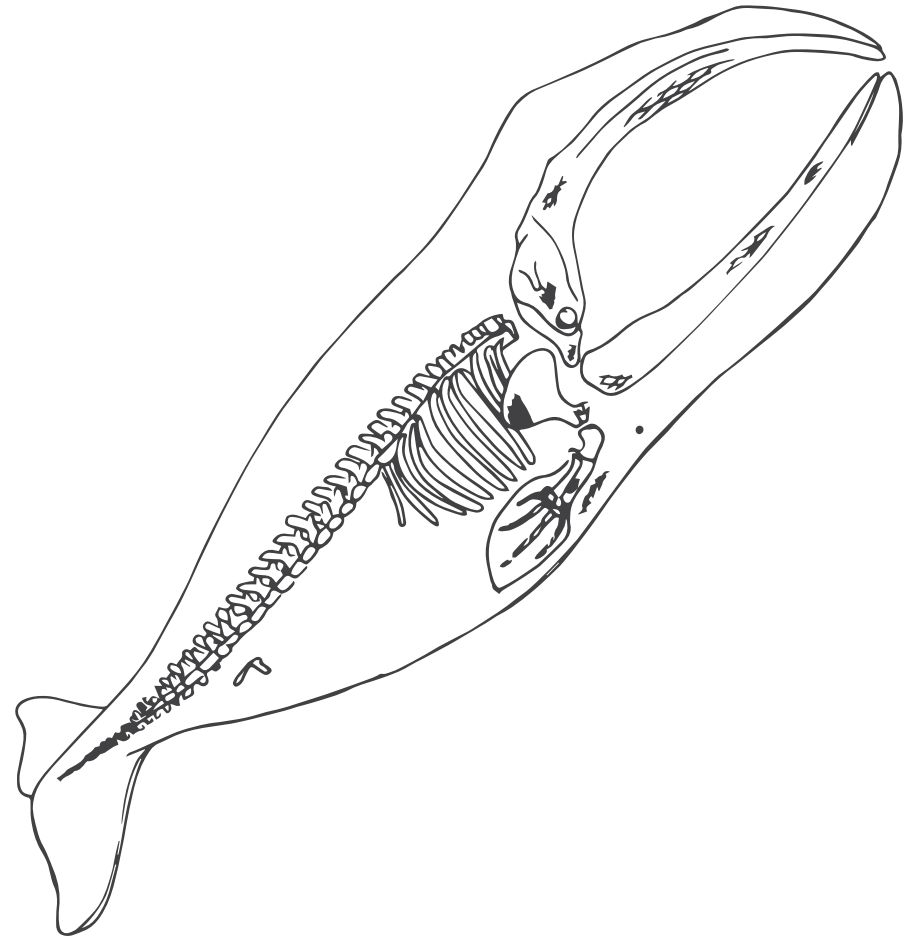
**[kuspuk]**  
(/ˈkʌs.pʌk/):

An over-shirt with a large pocket and hood.

*Invite a friend or family member to share a story about a place where they feel at home. Document that story through writing, drawing, or both.*



## BOWHEAD WHALE



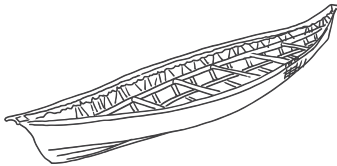
*Subsistence hunting of the bowhead whale is important to Inuit people. Inuit living in Alaska hunt the whale in the spring as the whale migrate north, and in the fall from skin boats, or umiaks, as the whales return south. A successful whale hunt is cause for great celebration. Growing to be as large as 59 feet, the bowhead provides meat and muktuk for the entire community. The baleen and bone are also used for creating tools and art.*

## KEY TERMS



**[parka]** (/ˈpɑrkə/): Winter coat with a hood, usually lined in fur. Traditionally made from caribou or seal skin.

**[subsistence]:** Use of wild, renewable resources from the land by individuals, families and communities for food, shelter, fuel, and other essential needs that are fundamental to a way of life.



**[umiak]** (/oo mē,ak): Traditional Inupiat boat made with skin stretched over a wooden frame.

*Who are you?*

I AM...

I WONDER...

I HEAR...

I SEE...

I DREAM...